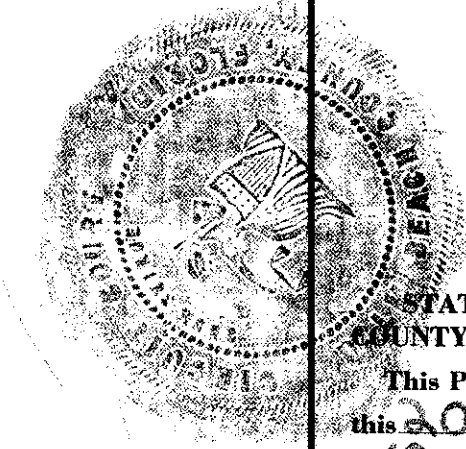


28/193



STATE OF FLORIDA  
 COUNTY OF PALM BEACH  
 This Plat was filed for record at 3:45 P.M.  
 this 20th day of SEPTEMBER  
 1968 and duly recorded in Plat Book No.  
 28 on page 193  
 JOHN B. DUNKLE, Clerk Circuit Court  
 By: Rita Canup, D. C.

PLAT NO. 8  
**FOREST HILL VILLAGE**  
 IN SECTIONS 14 & 15, TWP. 44 S., RGE. 42 E.  
 PALM BEACH COUNTY, FLORIDA

BEING A REPLAT OF PART OF LOTS 42, 43, 44, 51, 52, 61, AND 62, MODEL LAND COMPANY SUBDIVISION OF SECTION 14, TOWNSHIP 44 SOUTH, RANGE 42 EAST, AS RECORDED IN PLAT BOOK 5, PAGE 78, PUBLIC RECORDS OF PALM BEACH COUNTY, FLORIDA AND ALSO A REPLAT OF PART OF PARCELS "B" AND "C" AND PART OF THE 40.00 FOOT DRAINAGE EASEMENT SHOWN ON PLAT OF FOREST HILL VILLAGE NO. 7, AS RECORDED IN PLAT BOOK 28, PAGE 164, OF SAID PUBLIC RECORDS OF PALM BEACH COUNTY, FLORIDA.

32

STATE OF FLORIDA  
 COUNTY OF PALM BEACH

KNOW ALL MEN BY THESE PRESENTS THAT FOREST HILL VILLAGE, INC., a Florida Corporation, the owners of the Tract of land lying and being in Sections 14 and 15, Township 44 South, Range 42 East, Palm Beach County, Florida, shown hereon as PLAT No. 8, FOREST HILL VILLAGE, and more particularly described as follows to wit:

Beginning at the Northwest corner of Block 24, Plat No. 3, Forest Hill Village, as said Plat is recorded in Plat Book 26, Page 196, Public Records of Palm Beach County, Florida; and from said Point of Beginning (for convenience the West line of said Block 24 of Plat No. 3, Forest Hill Village is assumed to bear South 0° 03' 07" East, and all other bearings mentioned herein are relative thereto); run South 0° 03' 07" East, along the said West line of Block 24, Plat No. 3, Forest Hill Village, a distance of 110.00 feet; thence South 3° 19' 14" East, continuing along said West line of Plat No. 3, a distance of 60.08 feet; thence South 0° 03' 07" East, continuing along the said West line of Plat No. 3, a distance of 390.00 feet, more or less, to the Northwest corner of Tract "B", Block 21-A, Replat of Blocks 21 and 22, Plat 3, Forest Hill Village, as same is recorded in Plat Book 27, Page 32, Public Records of Palm Beach County, Florida; thence South 89° 56' 53" West, a distance of 718.43 feet; thence South 0° 03' 07" East, a distance of 170.00 feet; thence South 89° 56' 53" West, a distance of 701.93 feet, more or less, to a point in a line parallel with and 40.00 feet westerly from (measured at right angles to) the West line of said Section 14; thence North 0° 45' 30" East, along the said parallel line, a distance of 920.08 feet; thence North 89° 56' 53" East, a distance of 440.04 feet, more or less, to the Southwest corner of Lot 1, Block 38, Plat No. 7, Forest Hill Village as said Plat is recorded in Plat Book 28, Page 164, Public Records of Palm Beach County, Florida; thence South 28° 49' 45" West, running along the westerly line of said Plat No. 7, a distance of 91.35 feet, more or less, to the Northwest corner of Lot 18, Block 14, of said Plat No. 7; thence South 0° 03' 07" East, running along the West line of said Lot 18, a distance of 110.00 feet, to the Southwest corner of Lot 18; thence North 89° 56' 53" East, running along the South line of said Block 14 of Plat No. 7, a distance of 114.88 feet to a point in the westerly line of the 40.00 foot drainage easement as shown on said Plat No. 7; thence South 30° 02' 21" West, running along the said westerly line of the 40.00 foot drainage easement, a distance of 647.23 feet, more or less, to a point in the North line of Parcel "B" of said Plat No. 7; thence South 89° 56' 53" West, continuing along the said North line of Parcel "B", a distance of 6.88 feet; thence North 0° 45' 30" West, running along the West line of said Parcel "B", a distance of 110.01 feet; thence North 89° 56' 53" East, a distance of 60.01 feet, more or less, to a point in the East line of Parcel "C", as shown on said Plat No. 7, Forest Hill Village; thence North 0° 45' 30" East, running along the said East line of Parcel "C", a distance of 110.01 feet, more or less, to a point in the North line of said Parcel "C"; thence South 89° 56' 53" West, running along the North line of said Parcel "C", a distance of 6.88 feet, more or less, to a point in the easterly line of the said 40.00 foot drainage easement as shown on said Plat No. 7; thence North 30° 02' 21" East, running along the said East line of the 40.00 foot drainage easement a distance of 647.23 feet, more or less, to a point in the South line of said Block 14, of Plat No. 7, Forest Hill Village; thence North 89° 56' 53" East, running along the said South line of Block 14, of Plat No. 7, Forest Hill Village, and the easterly extension thereof, a distance of 846.88 feet, more or less, to the Point of Beginning.

The above described property includes parts of Lots 42, 44, 51, 52, 61 and 62, Model Land Company Subdivision of Section 14, Township 44 South, Range 42 East, as recorded in Plat Book 5, Page 78, Public Records of Palm Beach County, Florida, and also includes part of Parcel "B", Parcel "C" and the 40.00 foot drainage easement shown on Plat No. 7, Forest Hill Village, as same is recorded in Plat Book 28, Page 164, Public Records of Palm Beach County, Florida.

has caused the same to be surveyed and plotted as shown hereon, and does hereby dedicate to the perpetual use of the public as public highways, the streets shown hereon and the use of the easements for the construction and maintenance of public utilities and/or drainage purposes.

IN WITNESS WHEREOF, the said Corporation has caused these presents to be signed by its President and attested by its Secretary and its Corporate seal to be affixed hereto, by and with the authority of its Board of Directors this 25th day of MAY A.D. 1968.

Attest: *Ruth C. Abramson* Secretary  
 By: *Stephen Abramson* President

FOREST HILL VILLAGE, INC.

1000-251

STATE OF FLORIDA  
 COUNTY OF PALM BEACH

I HEREBY CERTIFY, that on this day personally appeared before me an officer duly authorized to administer oaths and take acknowledgements, STEPHEN ABRAMSON, and RUTH C. ABRAMSON, President and Secretary respectfully, of Forest Hill Village, Inc., a Florida Corporation, to me well known, and known to me to be the individuals described in and who executed the foregoing dedication and they acknowledged before me, that they executed the same as such officers of said Corporation, by and with the authority of its Board of Directors for the purposes therein expressed, and that their act and deed was the act and deed of said Corporation.

WITNESS my hand and official seal at West Palm Beach, County of Palm Beach, and State of Florida, this 27th day of May A.D. 1968.

My Commission Expires: November 25, 1970

*Jugoslav Horvath*  
 Notary Public

28/193

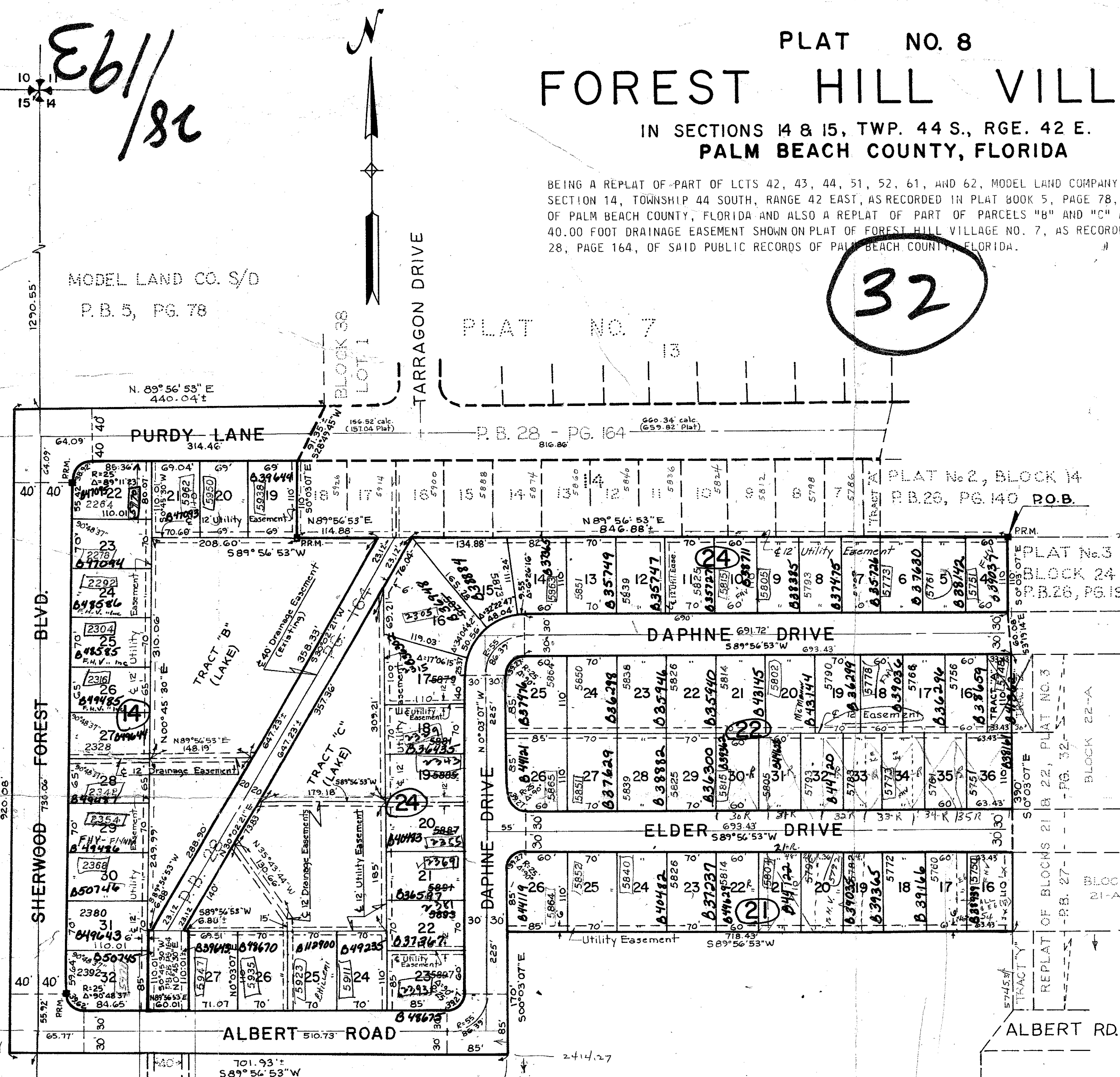
STATE OF FLORIDA  
 COUNTY OF PALM BEACH

I HEREBY CERTIFY, that the plat shown hereon is a true and correct representation of a survey, made under my direction, of the hereon described property, and that said survey is accurate to the best of my knowledge and belief, and that permanent reference monuments (P.R.M.) have been placed as required by law.

*David M. White*  
 Registered Land Surveyor  
 Florida Certificate No. 2222

This instrument was prepared by David M. White

**FOREST HILL VILLAGE**



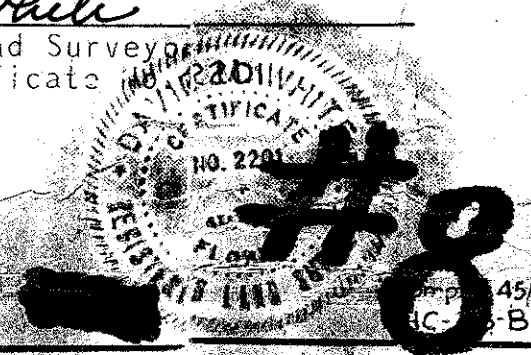
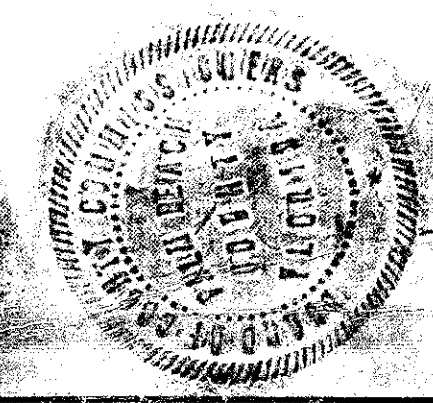
MODEL LAND CO. S/D  
 P.B. 5 PG. 78

- NOTES
- All Block Corners are rounded with a 25 ft. radius curve, unless otherwise shown.
  - Easements are for Public Utilities, unless otherwise noted.
  - Building Setback Lines shall be as required by Palm Beach County Zoning Regulations.
  - There shall be no buildings or other structures placed on utility easements.
  - There shall be no buildings or any kind of construction or trees or shrubs placed on Drainage Easements.
  - Tract "A" as shown hereon may be considered for building purposes only when treated as a building lot with Lot 16, Block 22 as shown hereon, or with Tract "B" Block 22-A, Replat of Blocks 21 and 22, Plat No. 3, Forest Hill Village.
  - Tracts "B" and "C" as shown hereon are reserved for the construction of a lake, said lake not to be considered for maintenance by the Board of County Commissioners, except by specific action of said Board.
  - ⊕ Denotes permanent reference monuments set.

Approved: SEPTEMBER 17TH A.D. 1968  
 Board of County Commissioners

By: *E. F. VanKessel*  
 Chairman

By: *W. H. Hill*  
 Acting County Engineer



BROCKWAY, OWEN & ANDERSON  
 ENGINEERS, INCORPORATED  
 WEST PALM BEACH, FLORIDA

PLAT NO. 8  
**FOREST HILL VILLAGE**  
 PALM BEACH COUNTY, FLORIDA

FIELD: JKA  
 OFF. C: AST-DMW  
 DR. BY: ELG-DMW  
 FIELD BK: F67-16

SCALE: 1" = 100'

DATE: MARCH 1968

Job No. 68-119  
 Dwg. No. BF-18

DRAWING NUMBER 28-193

PLAN-HOLD CORPORATION - PALM BEACH, FLORIDA

REGISTERED PROFESSIONAL ENGINEER

REGISTERED PROFESSIONAL SURVEYOR

REGISTERED PROFESSIONAL ARCHITECT

REGISTERED PROFESSIONAL LAND SURVEYOR

REGISTERED PROFESSIONAL CIVIL ENGINEER

REGISTERED PROFESSIONAL ELECTRICAL ENGINEER

REGISTERED PROFESSIONAL MECHANICAL ENGINEER

REGISTERED PROFESSIONAL CHEMICAL ENGINEER

REGISTERED PROFESSIONAL INDUSTRIAL ENGINEER

REGISTERED PROFESSIONAL AERONAUTICAL ENGINEER

REGISTERED PROFESSIONAL METALLURGICAL ENGINEER

REGISTERED PROFESSIONAL NUCLEAR ENGINEER

REGISTERED PROFESSIONAL AGRICULTURAL ENGINEER

REGISTERED PROFESSIONAL FORESTRY ENGINEER

REGISTERED PROFESSIONAL MINING ENGINEER

REGISTERED PROFESSIONAL PETROLEUM ENGINEER

REGISTERED PROFESSIONAL MARINE ENGINEER

REGISTERED PROFESSIONAL AERONAUTICAL ENGINEER

REGISTERED PROFESSIONAL METALLURGICAL ENGINEER

REGISTERED PROFESSIONAL NUCLEAR ENGINEER

REGISTERED PROFESSIONAL AGRICULTURAL ENGINEER

REGISTERED PROFESSIONAL FORESTRY ENGINEER

REGISTERED PROFESSIONAL MINING ENGINEER

REGISTERED PROFESSIONAL PETROLEUM ENGINEER

REGISTERED PROFESSIONAL MARINE ENGINEER